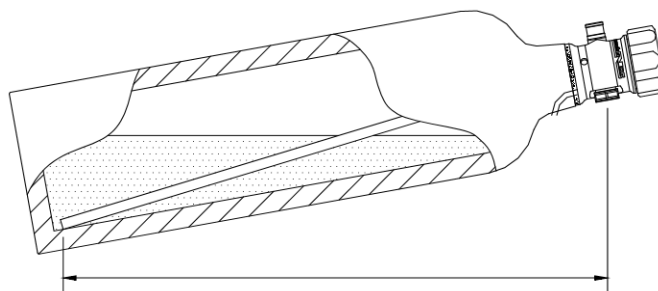


Cylinder Orientation

The orientation of the cylinder is an important consideration when installing your system. To have the most efficient use of the contents and reduce the chance of surging, choose the correct orientation.

Wherever you install your cylinder ensure the dip-tube remains in the liquid at all times. Standard cylinders require the valve facing down and raised with relation to the base (See Fig. 4A). If the cylinder is mounted transversely rotate the cylinder up to 45° so the outlet faces towards the rear.

Fig. 4A



Note: All standard cylinders cannot be fitted upside down or with the valve outlet facing the rear. If you should wish to mount the cylinder in this way please contact your local agent or our technical team for advice.

Cylinder Base Mounting

- Position the cylinder allowing access to both the valve and the connections.
- Ensure that the cylinder is easily removable from this location.
- Ensure the base/cylinder orientation is correct for this location. (See above)
- Lay the base into position and mark through the mounting holes.
- Drill 8 x 3mm holes and fasten with the screws supplied.

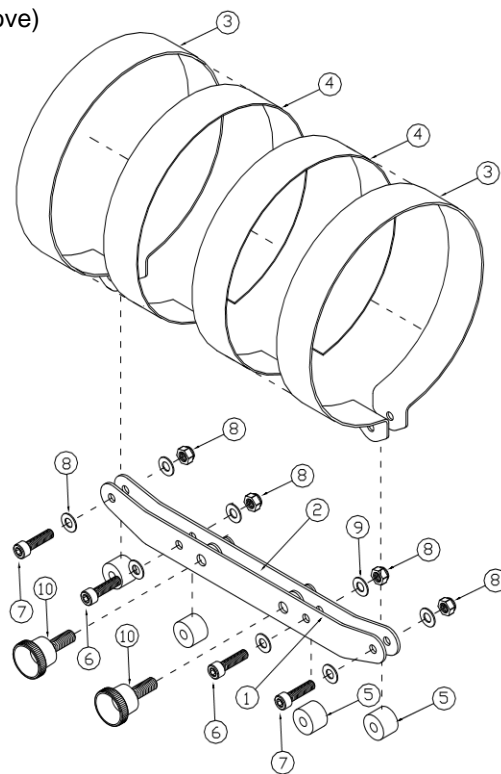
! IMPORTANT ADVICE !

- For safety mount the bracket directly to the metalwork of the chassis. Where this is not possible use a suitable section of thick boarding (10mm+) and secure it to the vehicle.
- Always check beneath base location before drilling to prevent damaging wires, pipes, spare tyre, petrol tank etc.

Cylinder Bracket Assembly (5 & 11lb)

- Push through 2 x 25mm Bolts (6) with washers (9) through the inner 6mm holes of the plain mounting plate (1).
- Slide a single plastic guide (5) over each bolt end then using the Nyloc nuts (8) and washers (9) attach mounting plate (2) with the stud inserts facing outwards as shown in Fig 4b. Beware do not over tighten as this will distort the spacers making it difficult to mount on the base.
- Cut 2 x sections of the supplied protection strip (4) to approximately 345mm (5lb) or 465mm (11lb) and affix to the inside of each strap (3).
- Using the SS Bolts (7) with washers (9), plastic guides (5) and nyloc nuts (8) retain each bracket strap (3) to the mounting plate by a few threads to leave the bracket slack enough to adjust.
- Place the cylinder through the straps then lay it on its back with valve outlet and mounting bracket facing upwards.
- For ease of use align the mounting plates with stud inserts facing towards the closest side of the vehicle. I.e. If the cylinder is on the left of the boot the plate studs should face the left.
- Align the mounting plates to be inline with the outlet of the valve and tighten each bolt until each strap end is flat with the mounting plates. (Periodically check the strap is straight while tightening).
- If the cylinder sticker is desired affix this now in relation to the straps and rotation of the cylinder.
- To use, simply lower the bracket over the base. The plastic guides should align the stud holes close enough to insert one of the clamping studs (10). Raising the unfastened end should now allow the second clamping stud to easily pass through.

Fig. 4B



Cylinder Mount Parts List

- 1 – Cylinder Mounting Plate (1)
- 2 – Cylinder Mounting Plate with Inserts (1)
- 3 – 11lb SS Strap (2)
- 4 – Self Adhesive Protection Strip (2)
- 5 – Plastic Spacer/Guide (8)
- 6 – SS M6 x 25mm Bolt (2)
- 7 – SS M6 x 30mm Bolt (2)
- 8 – SS M6 Nyloc Nut (4)
- 9 – SS Washer (8)
- 10 – Clamping Studs (2)